



There are many excellent golf courses in the Surrey area. We have selected three clubs located within a few miles of The Manor House which will challenge differing levels of ability. We have also chosen a Championship course for the more serious golfer, so get working on that handicap!

Wentworth Golf Club



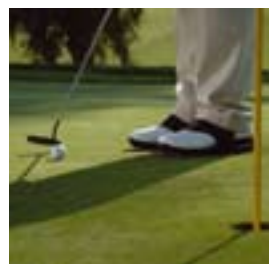
Forty minutes from The Manor House lies this famous golf club with three 18-hole Championship standard courses and one 9-hole course in heathland surrounded by woodland of pine, oak and birch.



The West Course is familiar to millions of television viewers worldwide as it is home to the annual PGA and World Match Play Championships staged in May and September respectively. Also home to the world-famous HSBC World Matchplay Championship, the West Course has been played by some of the greatest players in the world and is considered one of the finest inland venues in Europe. The East Course is often overshadowed but is, in fact, the older of the two courses. The Edinburgh Course is the newer of the trio and very much a challenge to any player.



Societies and company groups are invited to play between Monday and Thursday (excluding Bank Holidays). Group green fees are only offered together with a package of food, drink and room hire. In addition, handicap certificates required – Ladies 32, Men 24.



Type	Wooded Heathland
Holes	18

	West Course	East Course	Edinburgh Course
Par	73	68	72
Yards	6,739	5,966	6,585

www.wentworthgolfclub.co.uk
 Telephone 01344 842201 / 846330



golf guide ...

Puttenham Golf Club

Puttenham is one of the oldest golf clubs in Surrey, originally formed in 1894 by a group of Army Officers, Charterhouse School Masters and local businessmen. The course measures 6,220 yards with a par of 71 from the white tees and 5,784 yards with a par of 70 from the yellow tees. The course is a mixture of heath and woodland, the tree-lined fairways provide a particularly splendid backcloth of colour for the attractive sections of heather and many types of wild flowers. The course, with its predominantly sandy soil, is usually dry underfoot and drains quickly in the wettest of weather for excellent playing conditions all year round. Recent additions to the course include a new driving range and putting green next to the first tee, perfect for warming up before your round.

Par	71
Yards	6,220

Type	Heathland
Holes	18

www.puttenhamgolfclub.co.uk

Telephone 01483 810498

Hurtmore Golf Club

This 18 hole pay and play golf course, which opened in 1992, was originally designed by BBC golf commentators Peter Alliss and Clive Clark. The 5,530 yard, undulating parkland golf course has several lakes that come into play more than once, as well as many well placed bunkers. So there is plenty of interest and challenge for golfers of all standards and superb drainage makes this available all year round. It isn't the hardest golf course in the world but does not claim to be. If you are looking for an enjoyable round in glorious surroundings then this is the place to be.

You can purchase prizes for the day at a 10% discount from their PGA professional shop. The club is also able to advise on 'Nearest the Pin' and 'Longest Drive' holes and can provide markers if required.

Par	70
Yards	5,530

Type	Parkland
Holes	18

www.hurtmore-golf.co.uk

Telephone 01483 426492

Broadwater Park Golf Club

This is one of the more popular public 9-holers in the area, but a well-looked-after course nonetheless. The fairways are wide in parts and allow you to open the shoulders a little but don't get too carried away with your driver - Broadwater Park has a nasty bite at times, and can wreck your card on a number of holes. While it may not test the skilled golfer, you'll struggle to find a better and more suitable course for the golfing beginner.

Par	727
Yards	1,301

Type	Parkland
Holes	9 (18 optional)

Telephone 01483 42995